

RERA No. **RAJ/P/2021/1538**  
[www.rera.rajasthan.gov.in](http://www.rera.rajasthan.gov.in)



# IMPERIAL

GARDEN

*A Luxurious Lifestyle...with the Essence of Royalty...*



Welcome to  
**IMPERIAL**  
GARDEN

An imperial abode where you live a  
*Royal Lifestyle*





## Overview

- ◆ 77 ROYAL LUXURIOUS FLATS  
3/4/5 BHK WITH MIN. 10'-3" CLEAR HEIGHT
- ◆ ELITE CLUB HOUSE
- ◆ MULTI SPORTS ACTIVITIES
- ◆ OPP. VIDHYADHAR NAGAR'S  
BIGGEST PARK ( THE SMRITI VAN)
- ◆ ALL 4 SIDE ROADS
- ◆ GREEN BELT ALONG WITH ONE SIDE OF PLOT



## SOUGHT-AFTER LOCATION WITH CLOSE PROXIMITY TO EVERYTHING YOU NEED

Imperial Garden with its charming infrastructure, delights you in ways that you have only imagined. The most preferred location by the residents, Vidhyadhar Nagar is situated near every lifestyle amenities from hospitals to multiplex malls, retail outlets and coveted educational institutions to world-class hotels. We offer you a home that is close to all the conveniences that provides you effortless living.



FAMOUS TEMPLE  
( PAPAD WALE HANUMAN JI )



MANIPAL HOSPITAL



SON 'N' MOON  
SHOPPING COMPLEX



SMRITI VAN PARK



DPS SCHOOL



CINESTAR  
MULTIPLEX



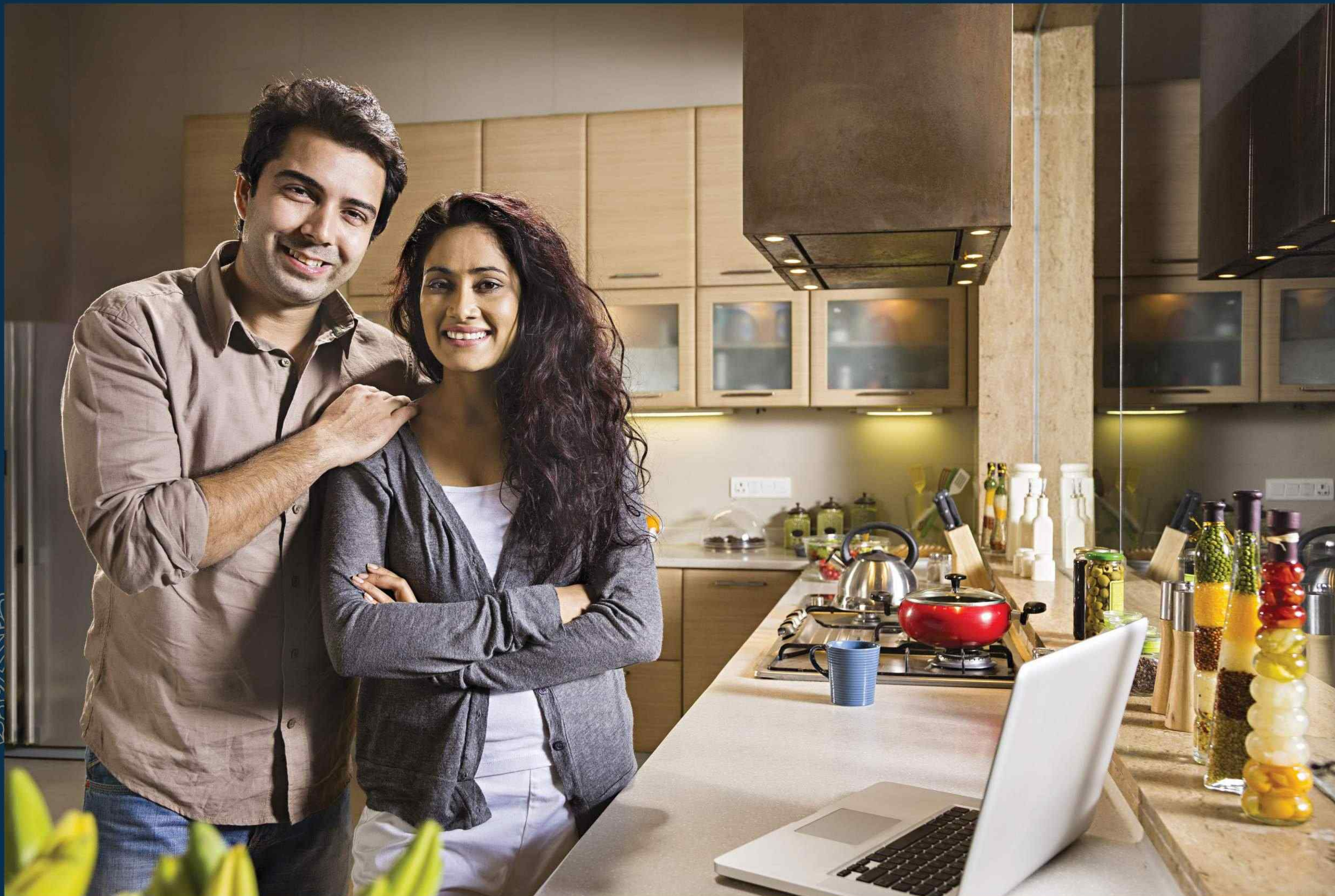
VIDHYADHAR NAGAR  
STADIUM



SIKAR ROAD

  
**IMPERIAL**  
GARDEN

Site : 5/H/II/R, Sector 5,  
Vidhyadhar Nagar, Jaipur



Home that offers a  
*Wholesome  
Lifestyle*  
to your Family...

A good environment plays the foremost role on your mental and physical health and leads you and your family to a flourishing lifestyle. As you step inside the spacious and excellently constructed Imperial Garden, a wave of positive energy and a pleasant environment will hit you.

Nestled in the prime location of Jaipur, Imperial Garden is a fusion of luxury and architecture of the yesteryear which makes an exciting and vibrant place. The vast landscapes, lush greenery and skillfully designed apartment makes it a favorable place to call it your home



IMPERIAL  
GARDEN

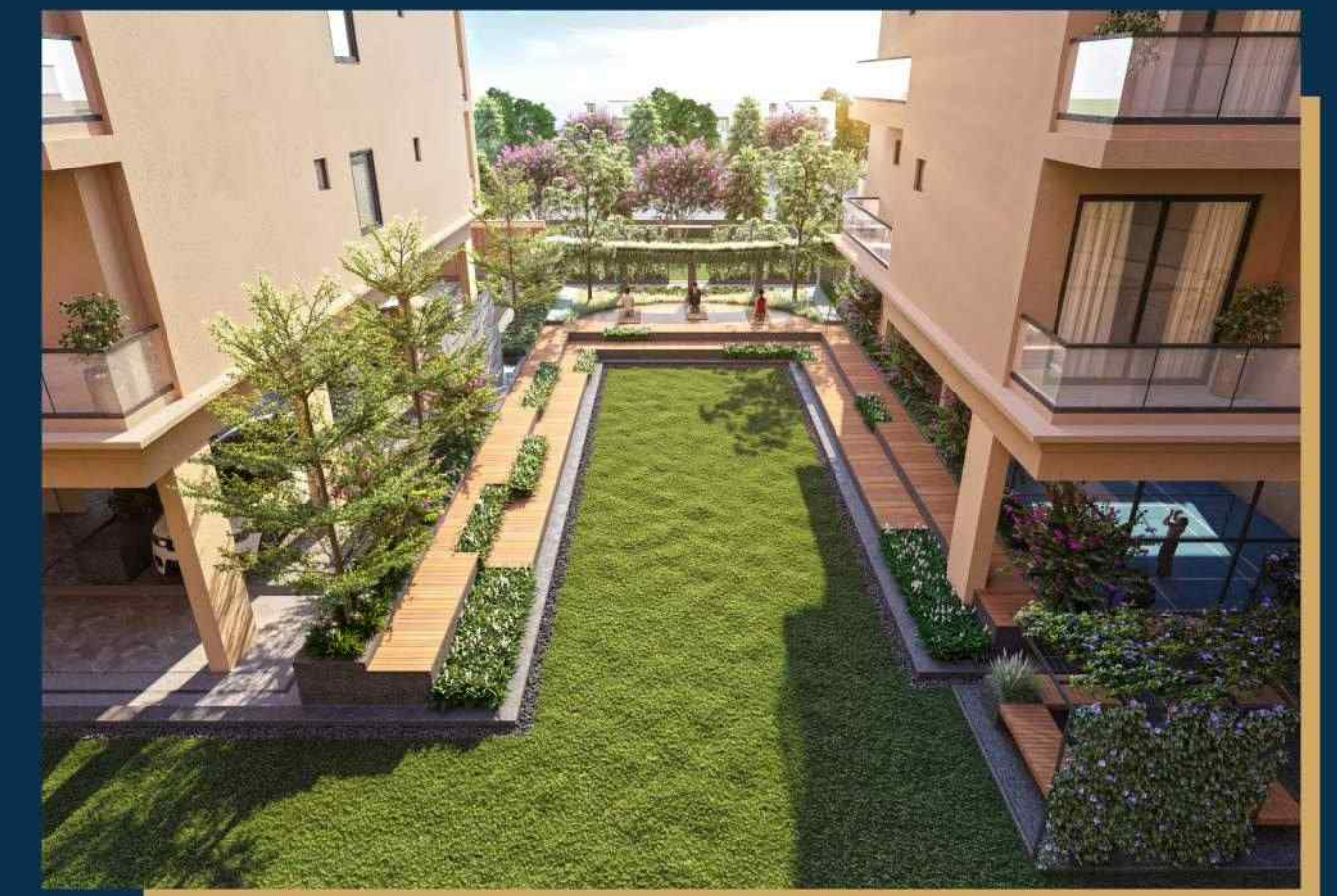
Opening doors to  
*Lavishly Aesthetic Life*  
at Imperial Garden

- ◆ 4 SIDE ROADS
- ◆ 2 SEPARATES TOWERS WITH GRAND ENTRANCE LOBBY
- ◆ SEPARATES PARTY TERRACES FOR EACH TOWER
- ◆ LAVISH CENTRAL GARDEN

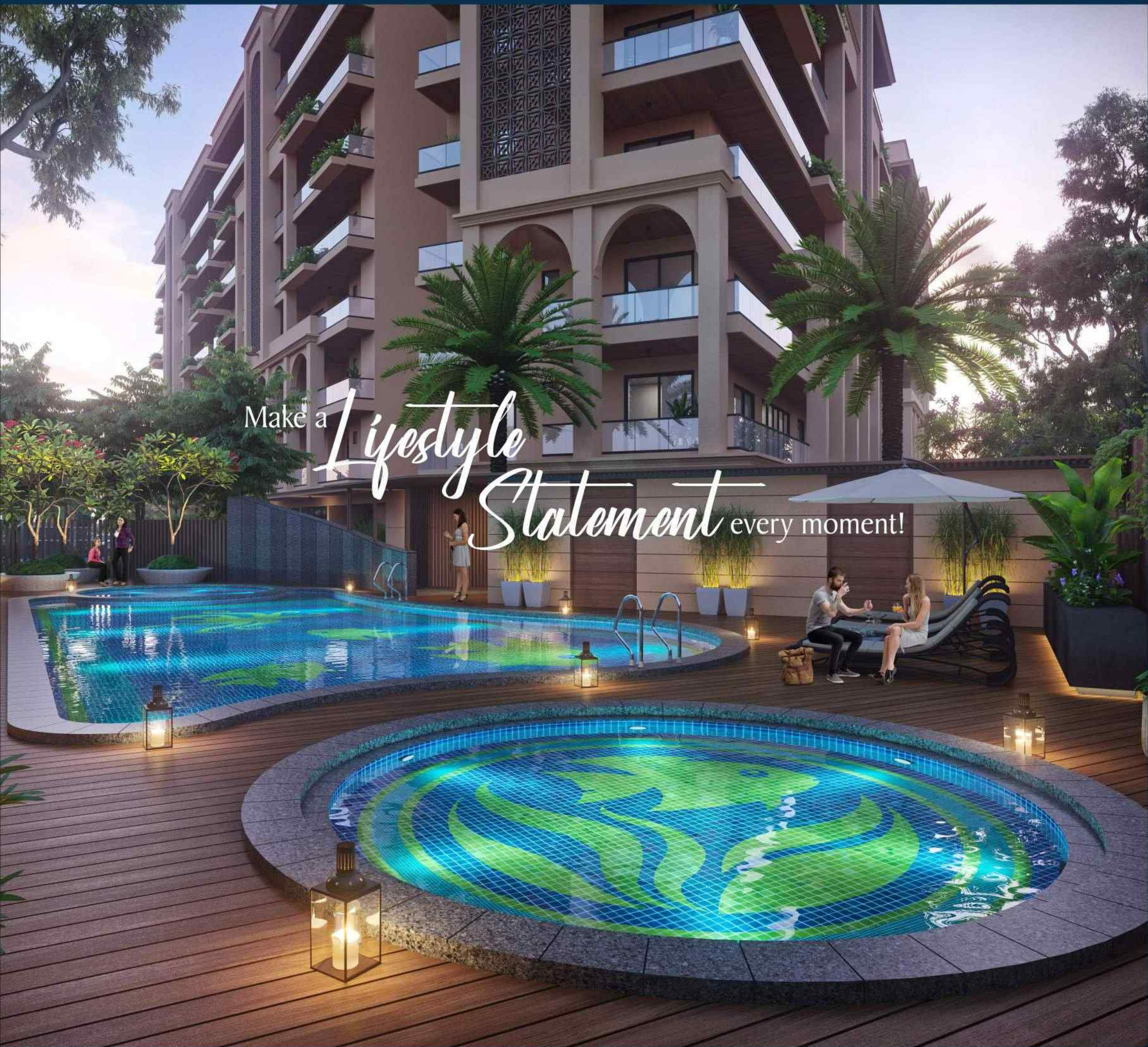


## A GREEN AND HEALTHY LIFE AWAITS YOU

Waking up early and traveling miles for morning walks or jogging seems too much but with Imperial Garden you get a well curated jogging track and landscaped garden. Now adapt a healthy lifestyle by going for jogging or morning walks and keep your mind and body in good shape.



- ◆ JOGGING TRACK
- ◆ CENTRAL GARDEN
- ◆ GAZEBO SITTING
- ◆ YOGA DECK



Make a *Lifestyle Statement* every moment!



## FIND TRANQUILITY RIGHT WHERE YOU LIVE

We understand the craving for mental peace in this fast paced life and thus, our yoga and meditation room is where you can find tranquility and balance between your mind and body. Our children's pool is designed for your children to have a relaxing and fun time once in a while that will help them concentrate better in their studies.



KIDS POOL



SWIMMING POOL



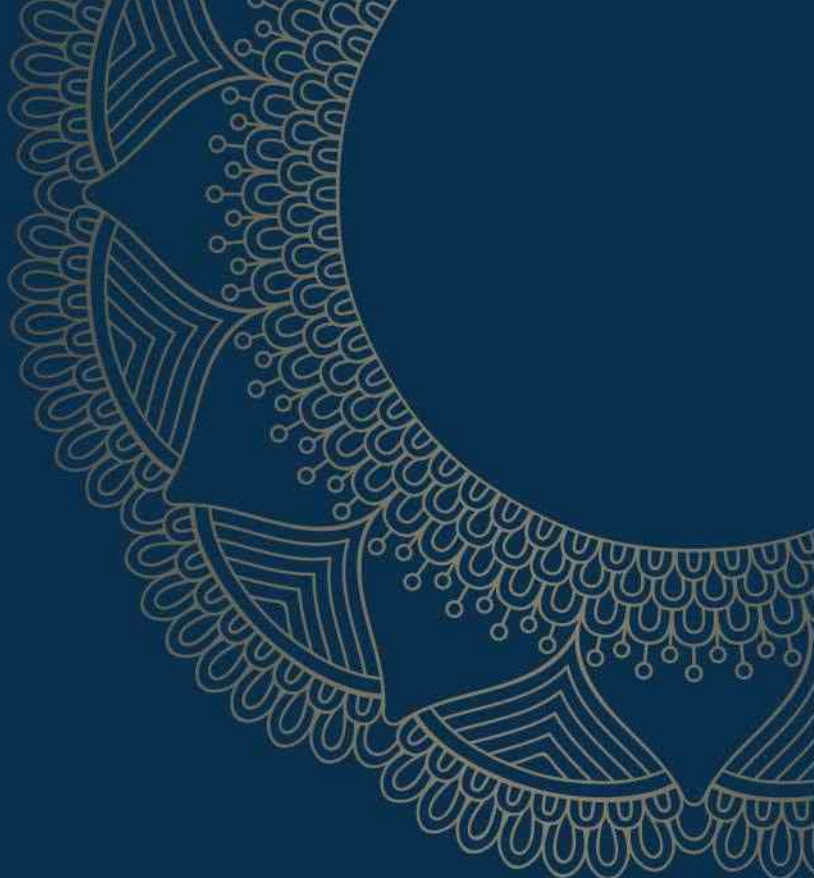
IMPERIAL  
GARDEN

It's not just about Living,  
It's about  
*Living our  
Dream*

*Unmatched Way* of Life

IMPERIAL  
GARDEN





# GIVE A NEW MEANING TO YOUR WELL-BEING

Our outdoor activities offers you to adapt a healthy & active lifestyle and engage in a game with your family or other residents. Socializing is in human nature and through outdoor activities you get a chance to socialize along with staying healthy which has a positive impact in your life.



PICKLE BALL COURT



KIDS PLAY AREA



## NOW FUN IS RIGHT WHERE YOU LIVE

At Imperial Garden our customers desire to have all the benefits of apartment complex comes true. A state of the art home theatre for your movie nights, banquet hall to celebrate your special day with your loved ones, and a selection of entertainment options that offers you an ideal lifestyle.

HOME THEATER



CRECHE



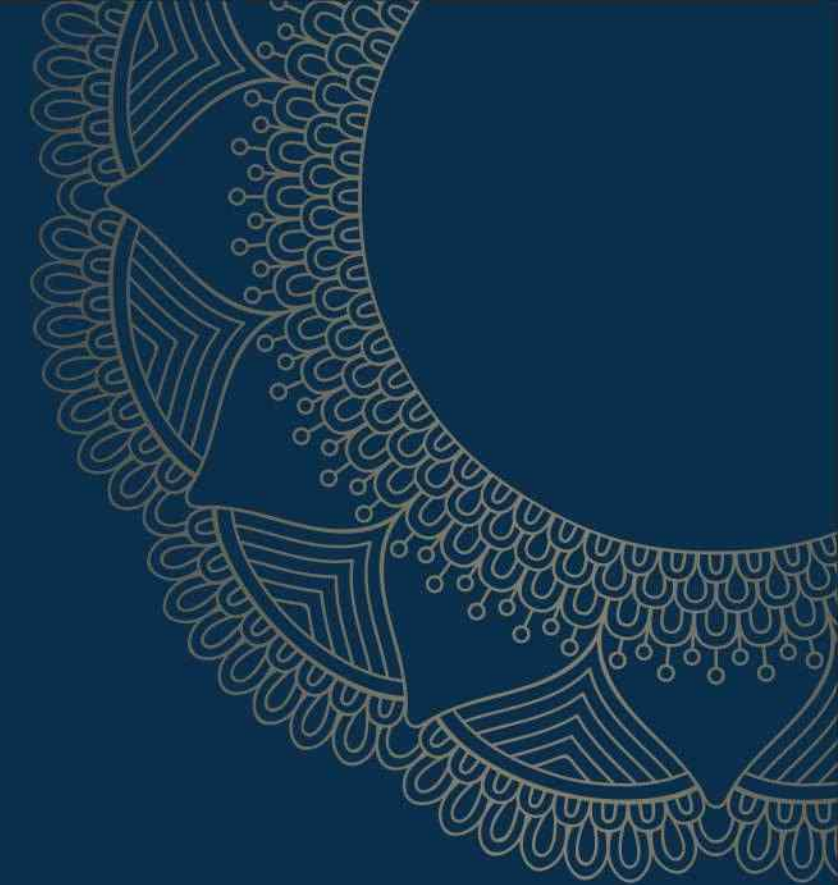
BANQUET HALL



INDOOR GAMES



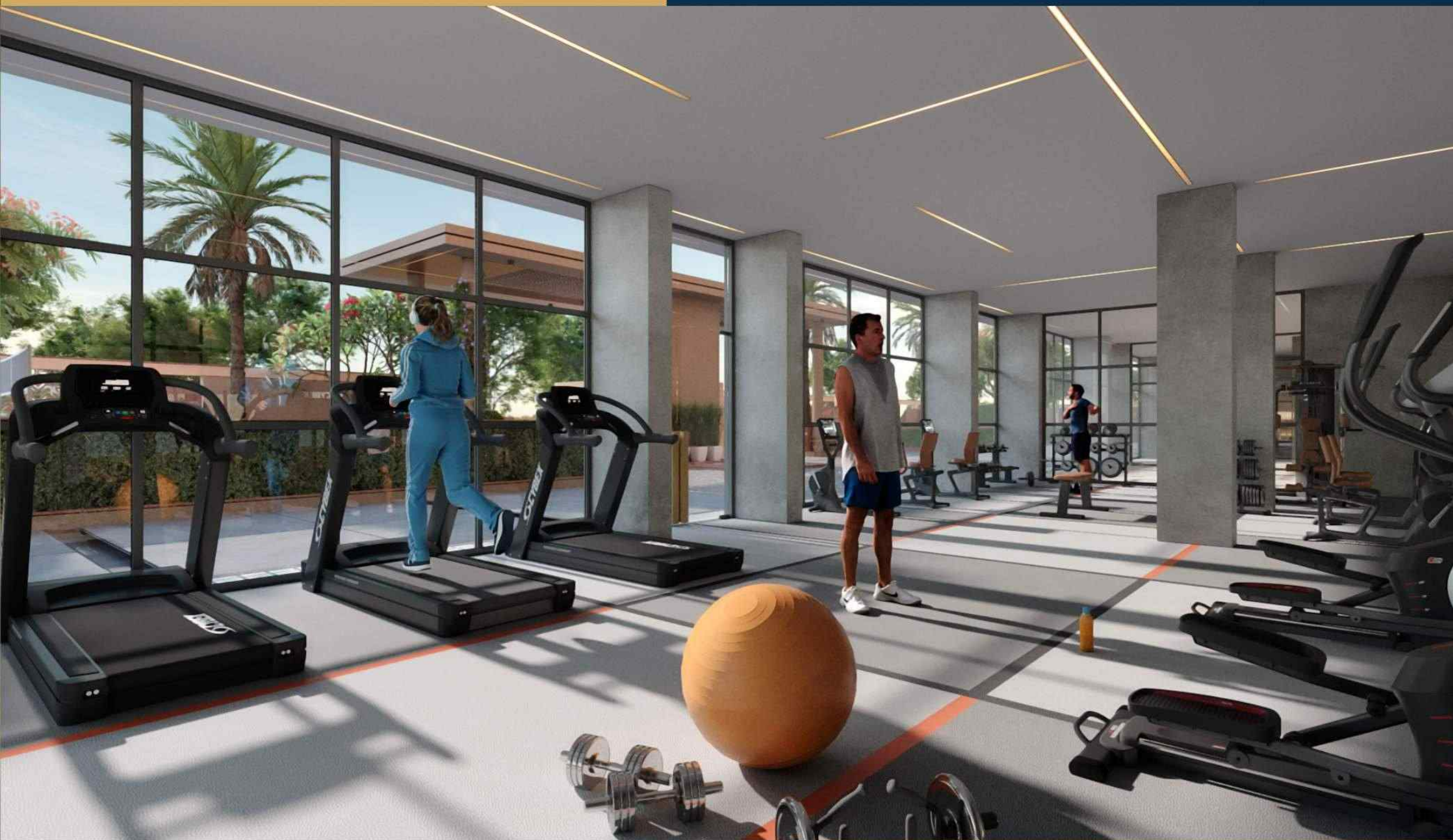
INDOOR BADMINTON COURT



## WHEN LIFE GETS MUNDANE, HEAD TO THE CLUB HOUSE

Our exclusive club house offers you many engaging environment with indoor activities. The pool table, table tennis, and many more are common activities where you and your children can interact with fellow residents. All the premium amenities is now easily accessible for the select few.





## A HEALTHY BODY, A HEALTHY LIFESTYLE

Been wanting to join gym but couldn't because of the busy schedule?

Our premium gymnasium with well equipped machines is just what you need without having to go anywhere else. Embrace the indulgence of your mind and body that saves up your precious time and offers you a healthy body.





IMPERIAL  
GARDEN





Make a *Lifestyle Statement* every moment!



## LEGENDS

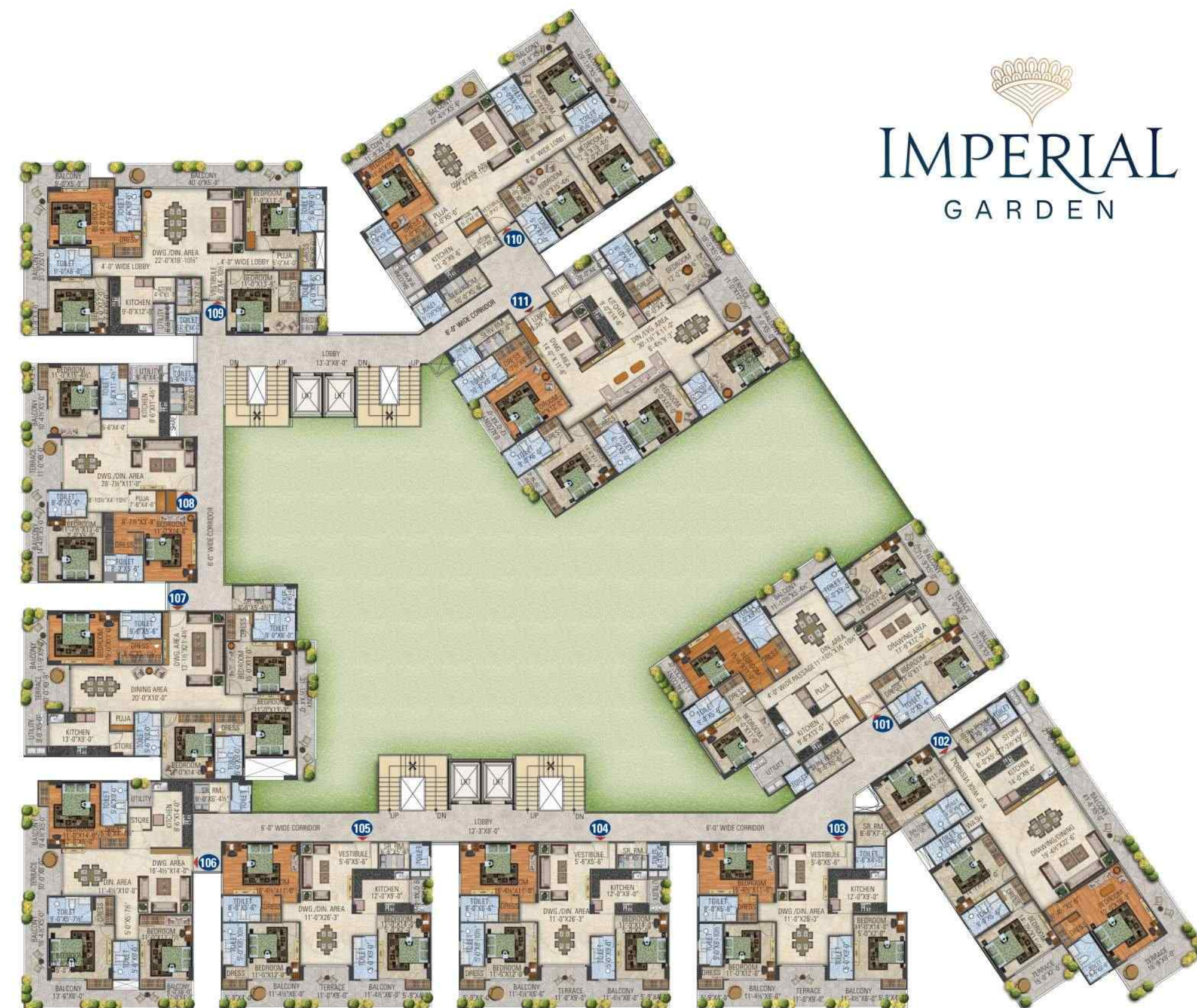
- |                                     |                             |
|-------------------------------------|-----------------------------|
| 1. Splash Fountain                  | 16. Store                   |
| 2. Precast Planter Bed with Sitting | 17. Kitchen                 |
| 3. Planter Bed with Shrubs          | 18. Stone Platform / Paving |
| 4. Sitting Area                     | 19. Guard Room              |
| 5. Amphy / Sitting Area             | 20. Grass Pavers            |
| 6. Children Park                    | 21. Central Garden          |
| 7. Pickle Ball Court                | 22. Washrooms               |
| 8. Basket Ball Pole                 | 23. Sculpture Wall          |
| 9. Kids Pool                        | 24. Jogging Track           |
| 10. Jacuzzi                         | 25. Gym                     |
| 11. Pool                            | 26. Water Spout             |
| 12. Changing Room                   | 27. Flower Bed              |
| 13. Banquet                         | 28. Planter Pots            |
| 14. Lobby                           | 29. Cobble Stone Paving     |
| 15. Creche                          | 30. Parking                 |



GROUND FLOOR PLAN



**BASEMENT FLOOR PLAN**



**TYPICAL FLOOR PLAN**



TERRACE FLOOR PLAN

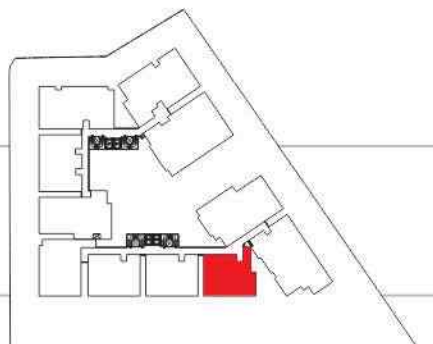




## UNIT PLAN



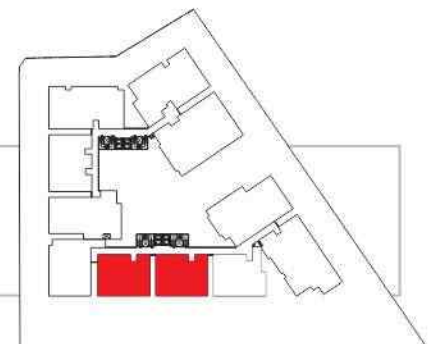
**3 BHK - A Type** | Flat No.-103  
B.U.A.-1608 Sq.ft. | Sale Area @1.35%-2170 Sq.ft.



## UNIT PLAN

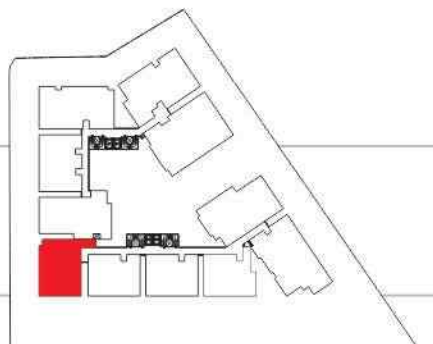


**3 BHK - B Type** | Flat No.-104 & 105  
B.U.A.-1630 Sq.ft. | Sale Area @1.35%-2200 Sq.ft.

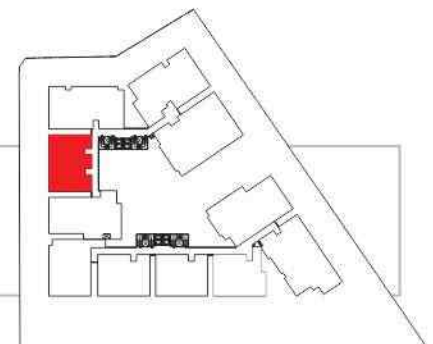




## UNIT PLAN



## UNIT PLAN

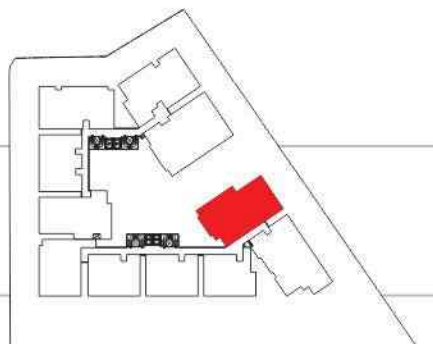




## UNIT PLAN



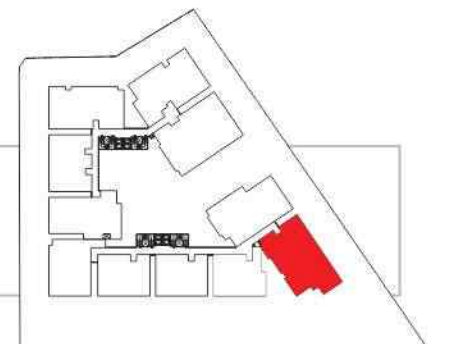
**4 BHK - A Type** | Flat No.-101  
B.U.A.-2444 Sq.ft. | Sale Area @1.35%-3300 Sq.ft.



## UNIT PLAN



**4 BHK - B Type** | Flat No.-102  
B.U.A.-2583 Sq.ft. | Sale Area @1.35%-3485 Sq.ft.

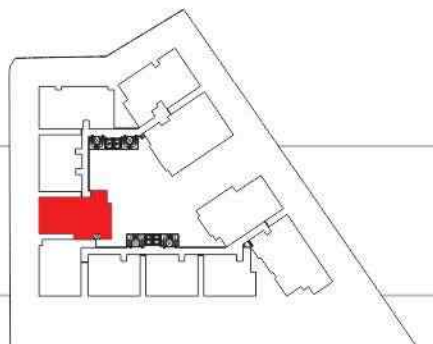




## UNIT PLAN



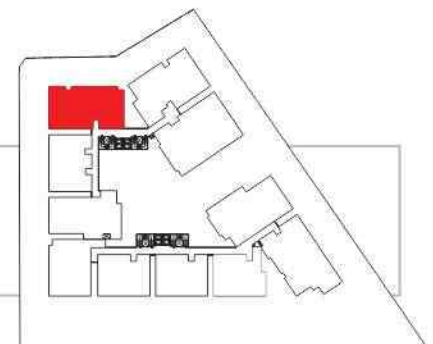
**4 BHK - C Type | Flat No.-107**  
B.U.A.-2156 Sq.ft. | Sale Area @1.35%-2910 Sq.ft.

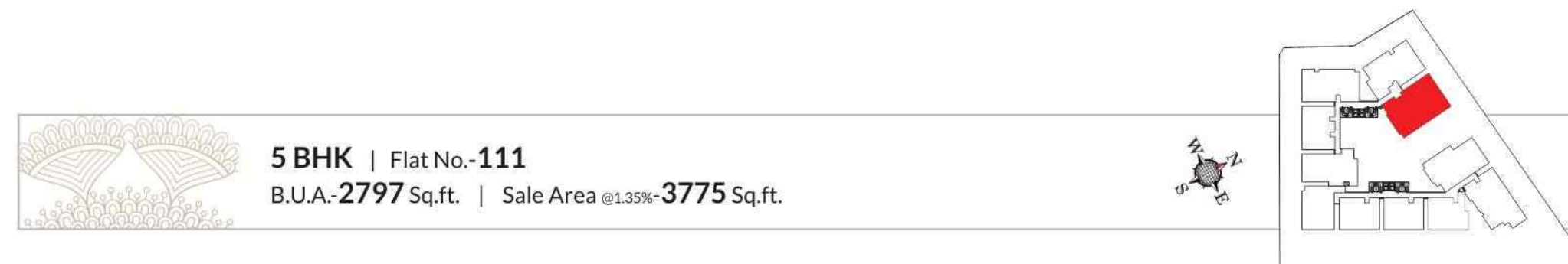
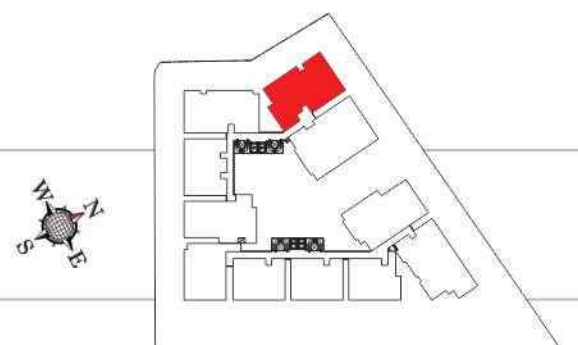


## UNIT PLAN



**4 BHK - D Type | Flat No.-109**  
B.U.A.-2332 Sq.ft. | Sale Area @1.35%-3145 Sq.ft.





SALIENT FEATURES



DRAWING/DINING

- ◆ Imported Marble flooring
- ◆ P.O.P. work in line on all walls and ceiling
- ◆ High quality Acrylic emulsion paint on all walls and ceiling
- ◆ 8'-0" Height Main Entrance designer Veneered Flush door with wooden door frame, 50 mm thick
- ◆ High Quality Euro Profile aluminum windows with Three Track System (With Wire mash provision)
- ◆ High-end Electrical switches of international make



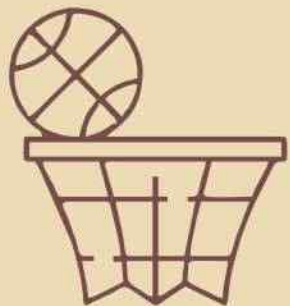
BEDROOMS

- ◆ Designer Large Size Tile Flooring
- ◆ P.O.P. work in line on all walls and ceiling
- ◆ High quality Acrylic emulsion paint
- ◆ 8'-0" Height Designer Veneered/Laminated Flush door with wooden door frame, 35 mm thick
- ◆ High Quality Euro Profile aluminum windows with Three Track System (With Wire mash provision)
- ◆ High-end Electrical switches of international make



TOILETS

- |   |   |
|---|---|
| ◆ Premium anti-skid tiles   | ◆ Hand Shower and Head Shower in Master Bedroom Toilet    |
| ◆ 8'-0" Height Designer Veneered/Laminated Flush door with wooden door frame, 35 mm thick | ◆ Single Lever Sanitary Fittings of International Quality |
| ◆ Over/Under the counter basin with Marble/Granite Top                                    | ◆ Sanitary ware of International Standards                |
| ◆ Separate wet area   | ◆ High-end Electrical switches of international make      |
|   | ◆ Provision of Geyser and Exhaust                         |
|   | ◆ Grid False Ceiling                                      |



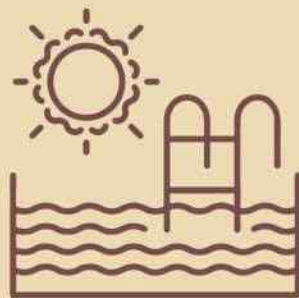
EXTERNAL AMENITIES

- |                          |                    |                         |
|--------------------------|--------------------|-------------------------|
| ◆ Central Garden         | ◆ Chit Chat Corner | ◆ Senior Citizen Corner |
| ◆ Roof Top Party Terrace | ◆ Pickleball Court | ◆ Green Walkways        |
| ◆ Party Lawn             | ◆ Basket Ball Pole | ◆ Lush Plantation       |
| ◆ Kids Play Area         | ◆ Jogging Track    | ◆ Gazebo Sitting        |
| ◆ Yoga Deck              |                    |                         |



KITCHEN

- ◆ Elegant kitchen
- ◆ Imported flooring or equivalent
- ◆ Granite Designer Counter top and Wall tile dedo or equivalent
- ◆ P.O.P. work in line on all walls and ceiling
- ◆ High Quality Acrylic emulsion paint in left over areas
- ◆ High Quality Euro Profile aluminum windows with Three Track System (With Wire mash provision)
- ◆ Gas Pipe Line and Gas detector
- ◆ Provision of Geyser and Exhaust and R.O. unit
- ◆ High-end Electrical switches of international make
- ◆ Double Bowel Sink and Washing machine point in utility area/balcony



CLUB HOUSE

- ◆ Banquet Hall with Party Lawn
- ◆ Gymnasium
- ◆ Badminton Court
- ◆ Aerobics/ Activity Room
- ◆ Indoor Games Area
- ◆ Table Tennis
- ◆ Billiards Lounge

CLUB HOUSE

- ◆ Swimming Pool with Deck
- ◆ Toddler's Pool
- ◆ Library with Tuition Rooms
- ◆ Virtual Office with Mini Conference Room
- ◆ Crèche
- ◆ Home Theatre
- ◆ High End Grand Lobby
- ◆ Society Office

SECURITY & SAFETY

- ◆ Gated Community
- ◆ Five Tear Security
- ◆ Video Door Phone
- ◆ Intercom Connectivity
- ◆ Guard House
- ◆ CCTV Surveillance
- ◆ 24 hours Security Services

HOME AUTOMATION

- ◆ All Major functional control in Living Area
- ◆ Provision of Video Door Phone
- ◆ Panic Button in the Kitchen/Master Bedroom

BALCONY & TERRACES

- ◆ Anti-skid Designer tile flooring
- ◆ Railing as per View

ELEVATORS

- ◆ Two Glass elevators per Tower

AIR CONDITIONING

- ◆ Copper Piping and Cabling for VRV

OTHERS

- ◆ Gas Bank
- ◆ STP



## THE GROUP

Nurtured over the years with strong roots, commitment, hard work, determination and dedication, Ball Park aims to create place that everyone would call it their 'Home' proudly. Today the company has grown into a large business conglomerate with varied diversified plans ahead with the determination to establish itself as a stalwart in its domain. Ball Park is a team of highly skilled, technical as well as non-technical professionals. Ball Park's aim is to surpass our customer's aspirations.



Builders & Developers

Office : 5/H/II/R, Sector 5, Vidhyadhar Nagar, Jaipur Ph.: 9649606099 | Website :[www.imperialgarden.in](http://www.imperialgarden.in)

Architect | Master Planning



UA DESIGN

Contact@uadesign.in | [www.uadesign.in](http://www.uadesign.in) | 079 48909585

Vastu Consultant : **Vastuart**

RERA No. **RAJ/P/2021/1538** [www.rera.rajasthan.gov.in](http://www.rera.rajasthan.gov.in)

Land Owner : **Mr. Ranveer Choudhary**

Disclaimer : This brochure is purely conceptual and is not a legal offering, nor will it be part of any binding document. All furnishing shown on all floor plans are for illustrative purposes only. The developer reserves the sole rights to amend the number of floors, number of units, layout, plans, elevation, colour schemes, specifications and amenities etc. without prior notice. All dimensions are approximate and subject to construction variances and approvals.

